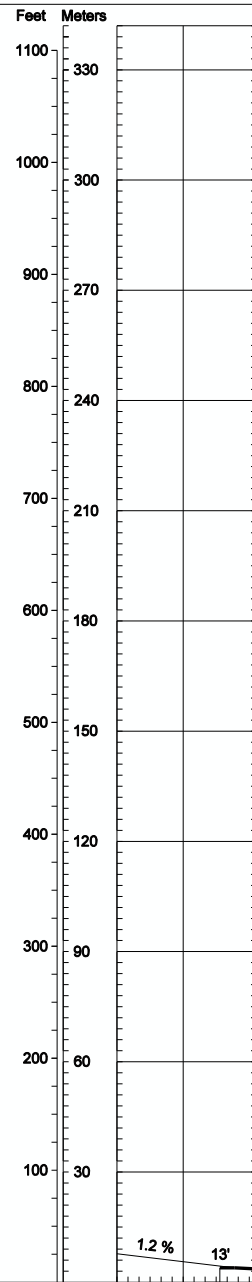


DIMENSIONS IN FEET / METERS  
ELEVATIONS IN FEET

AERODROME OBSTACLE CHART - ICAO  
TYPE A (OPERATING LIMITATIONS)

PRINCESS JULIANA INT'L (TNCM)  
PHILIPSBURG, NETHERLANDS ANTILLES

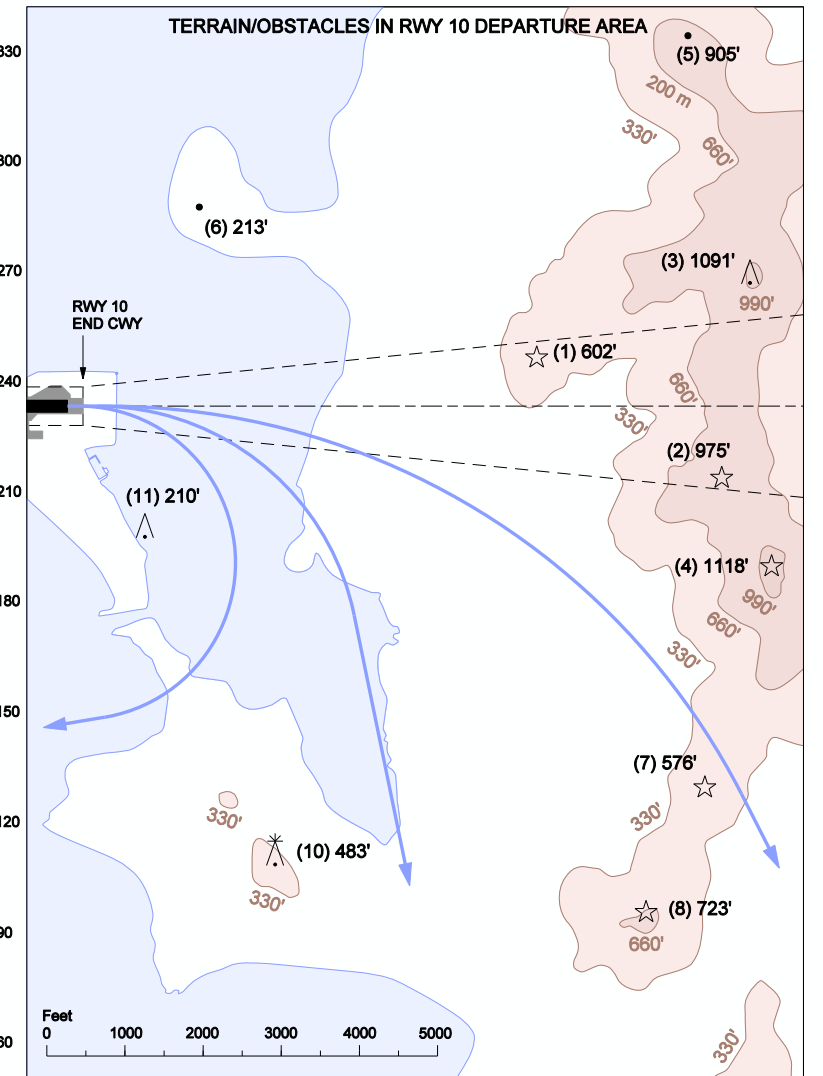
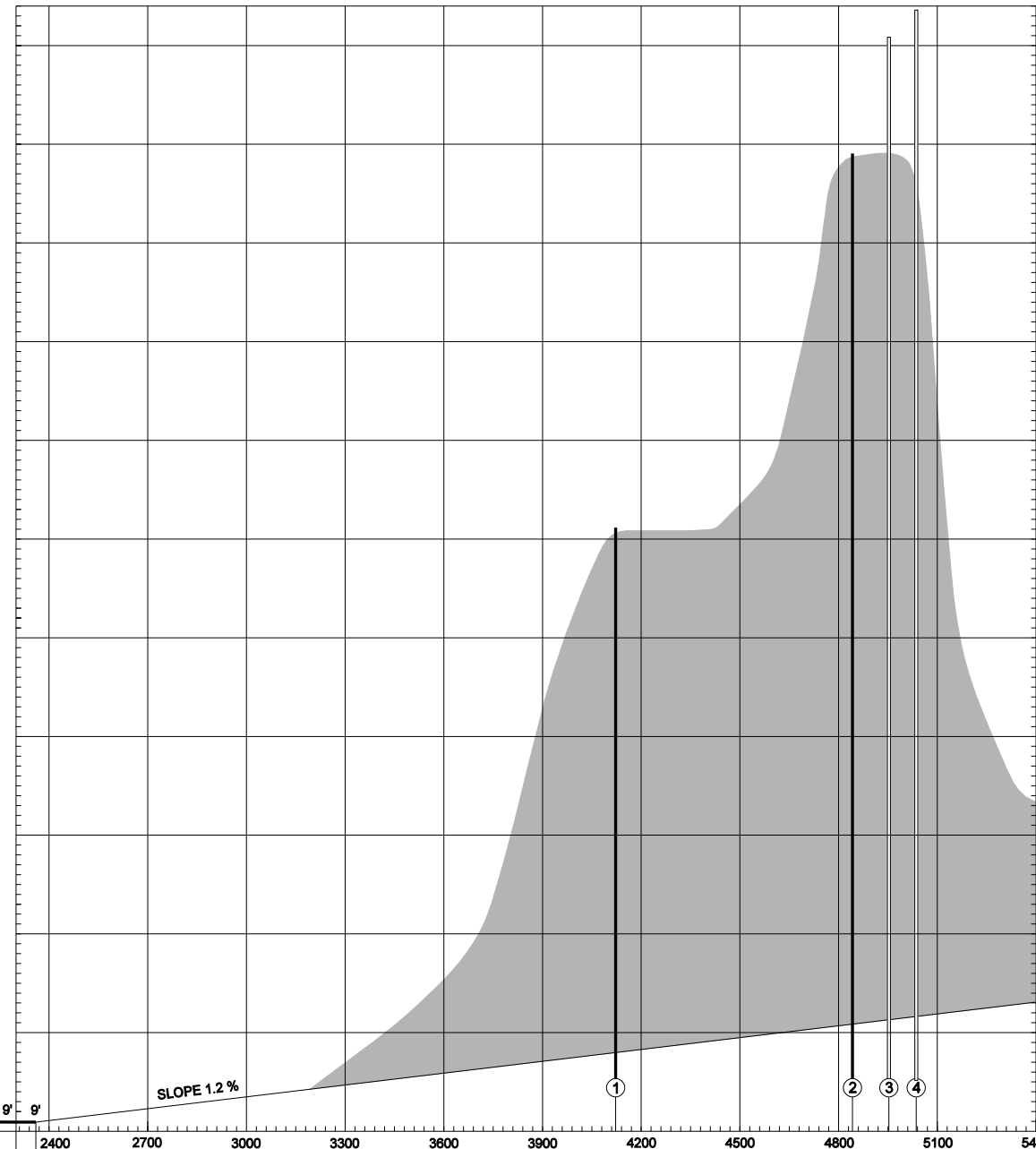
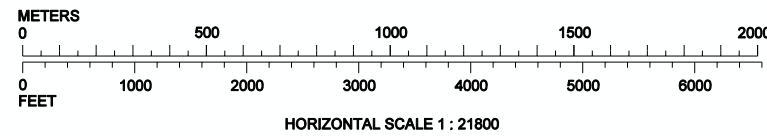


RWY 10 / 28 DECLARED DISTANCES				
RWY 10			RWY 28	
7546'	2300 m	Take-off run available (TORA)	7218'	2200 m
7743'	2360 m	Take-off distance available (TODA)	7415'	2260 m
7546'	2300 m	Accelerate stop distance available (ASDA)	7218'	2200 m
7218'	2200 m	Landing distance available (LDA)	7218'	2200 m

LEGEND	PLANVIEW	PROFILE
Identification number	①	
Pole, tower, spire, antenna	⚡	INSIDE / OUTSIDE
Hazard beacon	☆	
Spot elevation	•	
Building	■	

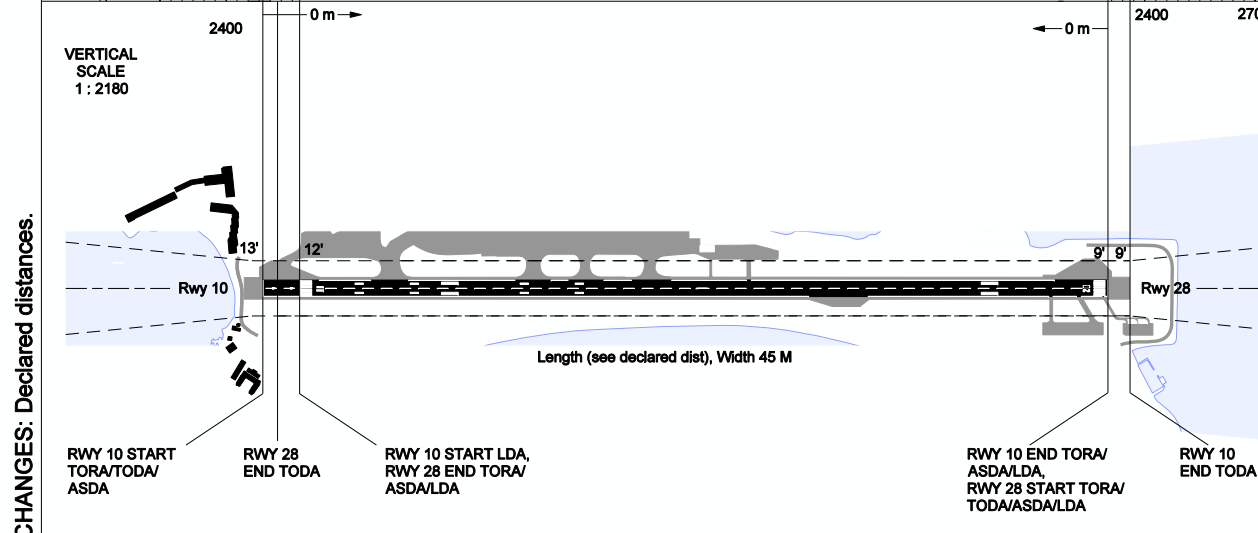
- RWY 10 DEPARTURE NOTES**
- The top of the ridge East of the runway must be visible.
  - Aircraft shall make a mandatory right turn as soon as practicable.
  - Left turn shall be requested prior to take-off and may be approved by ATC.

Magnetic variation: 14° W (2014)  
Order of accuracy: in accordance with ICAO standards.



- PURPOSE OF RWY 10 INSET:**
- Display prominent terrain/obstacles and typical visual departure tracks (blue lines).
  - Provide distance and procedure design gradient (PDG) from end of Rwy 10 clearway to prominent obstacles. PDG includes 295' vertical clearance:  
 $PDG = (\text{obstacle elev} - 6' \text{ end of CWY elev} - 16' \text{ start of PDG above end CWY} + 295' \text{ vertical clearance}) / \text{distance from end CWY on rwy centerline to obstacle}$
  - Operators will see and shall avoid the obstacles listed below and maneuver over lower terrain, permitting a lower PDG.

RWY 10 DEPARTURE OBSTACLE DATA AND PDG					
ITEM NO.	DESCRIPTION	ELEV	WGS-84 COORDINATES	END CWY TO OBST DIST	PDG
1	Hazard beacon	602'	N180247.73 W0630453.16	5820'	15.1%
2	Hazard beacon	975'	N180236.13 W0630426.60	8199'	15.3%
3	Old radar	1091'	N180301.99 W0630426.83	8673'	15.8%
4	Hazard beacon	1118'	N180225.99 W0630418.35	9019'	15.5%
5	Spot elevation	905'	N180330.83 W0630439.67	9048'	13.1%
6	Spot elevation	213'	N180300.24 W0630540.24	2940'	16.6%
7	Hazard beacon	576'	N180157.07 W0630422.76	9305'	9.2%
8	Hazard beacon	723'	N180140.38 W0630428.01	9657'	10.4%
9	Spot elevation	584'	N180117.05 W0630410.35	12417'	7.0%
10	Tower	483'	N180140.21 W0630517.60	6263'	12.1%
11	Sailboat (part time)	210'	N180218.88 W0630540.78	1850'	see/avoid
	East end of clearway	6'	N180233.16 W0630551.52		



CHANGES: Declared distances.